



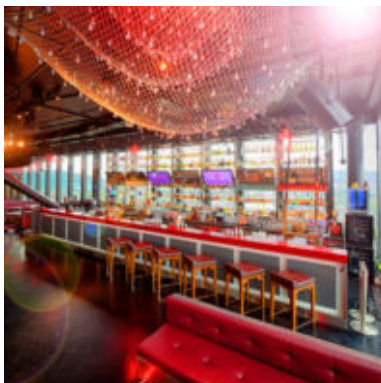
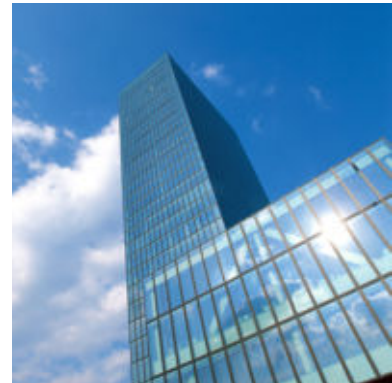


## Event locations

*Bar Rouge is on the two upper floors of the Messe (Basel Exhibition Center) building, which contains an exclusive lounge on the 30th floor and the bar on the 31st floor. For your event at the height of 105 meters, there are different areas available. You are welcome to come for a personal viewing.*

### Bar Rouge – the whole location

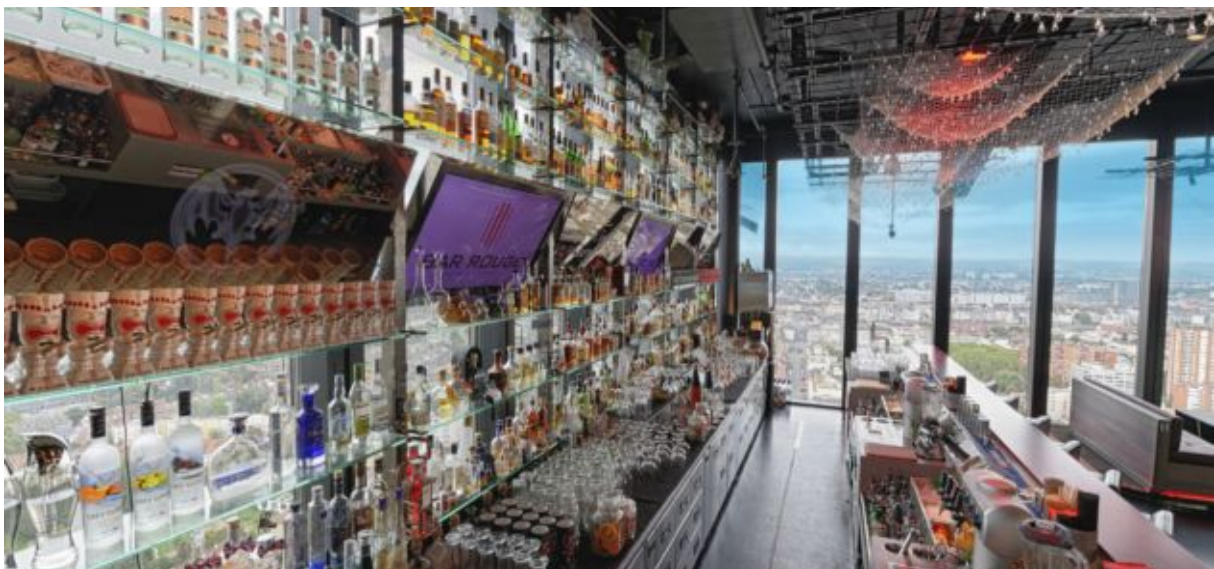
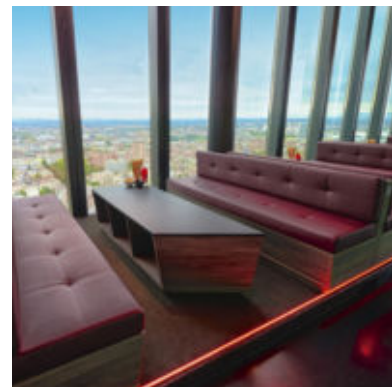
For exclusive events **up to 350 people**, Bar Rouge offers, with its stylish ambience, the perfect location to execute your event in a classy atmosphere.



**Conditions:** Rent price upon request

## Dance floor section – 31st floor

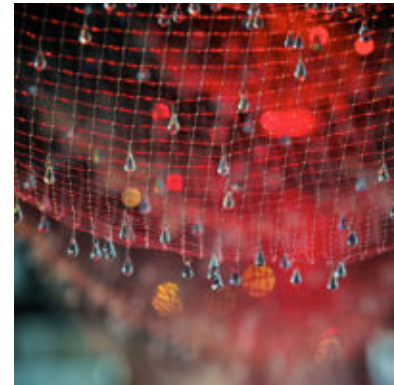
This is ideal for your event **up to 100 guests** with a marvelous view over the city of Basel, the Rhein, and the new exhibition center. During our opening hours there aren't usually any rental costs. For events during fairs and outside of the opening hours you can contact us anytime.



## VIP Section – 31st floor

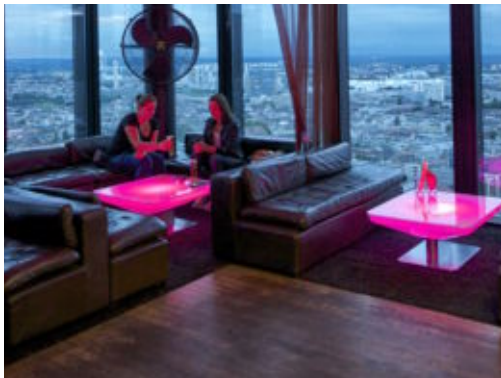
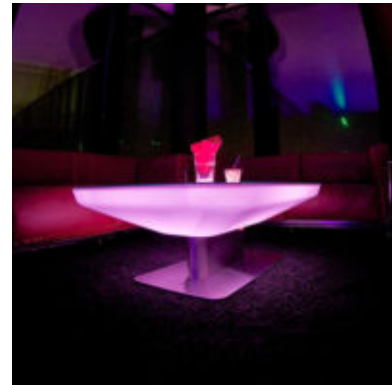
A cozy corner for small events **up to 30 guests**.

During our opening hours there aren't usually any rental costs. For events during fairs and outside of the opening hours you can contact us anytime.



## Executive lounge – 30th floor

The executive lounge is located on the 30th floor, which is optimal for private events for **up to 80 guests**. The room is perfect for presentations, workshops and/or seminars. Rental costs upon request.













♥♥ *A heavenly highlight in  
105 meters high* ♥♥

## SEDUCTION

- Filled salmon with Cantadou cream cheese on a stick
- Giant shrimp with chili
- Pan fried avocado with red bell pepper
- Meat balls with spicy tomato sauce
- Falafel with sour cream
- Skewered chicken with sherry-mustard marinade
- Apple-ginger soup served in a shot glass

Orders for 15 to 60 guests always on Tuesdays until Saturday. The preorder has to be placed 7 days before the event. Please just choose 1 type of finger food per reservation only.

### PRICE

7 Units:  
CHF 39.00 per guest

All prices include 7.7% VAT



## Beverages

	dl	CHF
Mineral water (with or without gas)	10	10.-
Orange juice	10	10.-
Coca Cola	10	15.-
Nestea Lemonade	10	15.-
Beer (Carlsberg, Bottle)	2.5	6.-
Prosecco DOC extra dry, Albino Armani	7.5	75.-

## White Wine

	dl	CHF
<b>Cuvée Blanc Mdm Rosmarie Mathier AOC</b> Adrian & Diego Mathier		
Wallis, Switzerland	1.0	10
Pinot Gris, Sylvaner, Pinot blanc, Petit Arvine	7.5	65
<b>Hacienda de Arinzana Blanco</b> Hacienda Arinzano		
Pago di Arinzano, Spain	1.0	10
Chardonnay	7.5	63
<b>Pecorino Terre die Chieti Vanità</b> Farnese		
Abruzzen, Italy	1.0	9
Pecorino	7.5	58
<b>Roero Arneis DOCG</b> Ettore Germano		
Piemonte, Italy	1.0	9
Arneis	7.5	60

## Red Wine

<b>Cuvée Rouge Mdm. Rosmarie Mathier AOC</b> Adrian & Diego Mathier		
Wallis, Switzerland	1.0	10
Syrah, Cabernet Sauvignon, Pinot Noir, Humagne Rouge	7.5	65
<b>Rioja Reserva</b> Ramón Bilbao		
Rioja, Spain	1.0	9
Tempranillo, Graciano, Mazuelo	7.5	61
<b>Primitivo del Salento Vanità</b> Farnese		
Apulien, Italy	1.0	9
Primitivo	7.5	58
<b>Amarone della Valpolicella</b> Albino Armani		
Venetien, Italy	7.5	105
70% Corvina, 25% Rondinella, 5% Molinara		

Alle Preise inklusive 7.7% MwSt.



## Punch bowl

	cl	CHF
With alcohol	100	54.-
without alcohol	100	38.-

All prices include 7.7% VAT

Individual Aperitif bowls on request from 5 liter and more

We are gladly here for you for any further questions. The price would be calculated according to the amount consumed. Advance orders required at least 7 days before the event.

## Further services & information

### Personal service

For your event at 105 meters above the city we provide you with a staff, which will be delighted to take personal care of your guests. For every staff member we charge 49.- per hour, excluding 1 hour installation/removal of the required set. Prices for out-service bar and catering upon request.

### Wardrobe

We gladly provide you with our coat service at the entrance on the ground floor. For every wardrobe employee we charge 38.- per hour.

### Security

For your safety we will provide, upon request, professional security personnel at a cost of 65.- per hour.

### Elevator

To reach Bar Rouge we ask our guests to use the specific Bar Rouge elevator. Outside of the opening hours the elevator has to be reserved and it is under surveillance for security reasons. An elevator operator can be employed at the rate of 49.- per hour.

### Decorations

Do you have a special wish for decorating your event premises? Share your thoughts with us. The cost of the material, equipment and labor will be born by the customer. Flower decorations will be arranged by us through a trusted florist. Additionally, our team will make a draft and print a copy of our own house menu and wine card.

### Parking possibilities

The parking garage across the Messe Tower is open 24 hours. The use of the Messe Tower subterranean garage is not possible.

### Payment conditions

100% of rental charges will be paid in advance

#### Food and beverage:

50% in advance, 50% after the event

#### Miscellaneous:

50% in advance, 50% after the event

### Annulation costs (general)

30 to 20 days before the event:

25% of the orders

19 to 12 days before the event:

50% of the orders

11 to 0 days before the event:

100% of the orders

### Annulation costs (during fairs)

180 to 151 days before event:

25% of the orders

150 to 91 days before event:

50% of the orders

90 to 0 days before event:

100% of the orders

### Changes

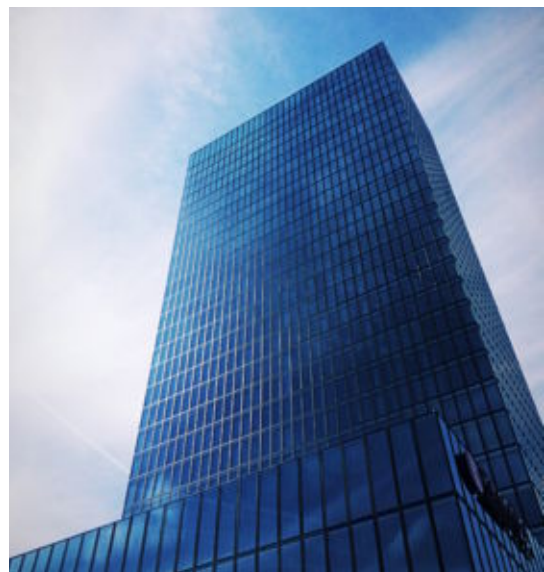
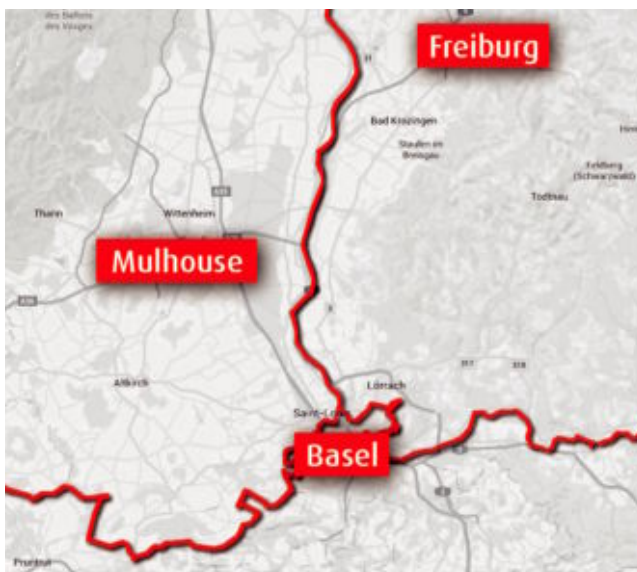
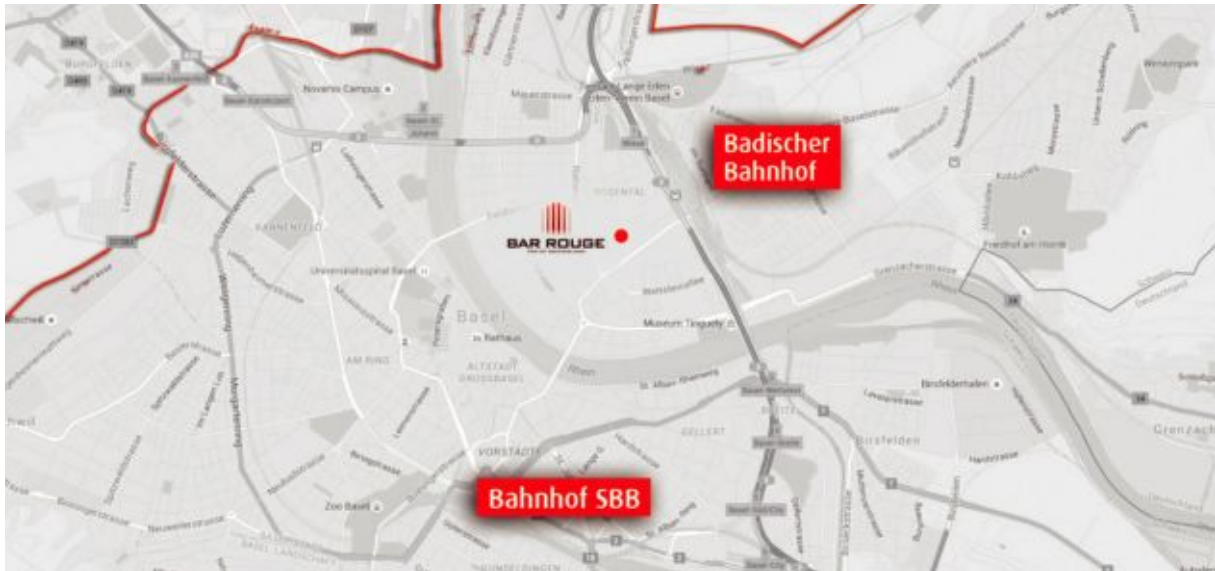
If there are changes in the number of guests, we ask you to inform us immediately.

The number of guests up to 7 days before your event is taken as final and will be used to order and prepare the finger foods.

### Liability

Bar Rouge denies any responsibility and liability in cases of theft and damage to the objects and clothing brought onto the premises by the customers and their guests.

## Where we are



**public transport:**  
tram stop "Messeplatz"

**tram: line 1, 2, 6, 14, 15**

You reach Bar Rouge from Swiss and French railway station (SBB/SNCF) by tram line 2 in 10 minutes,  
from German railway station with tram line 2 or 6 in 3 minutes

**car:**  
motorway exit "Messe"; parking: "Messe Parkhaus"